



## SUPER FAST RECOVERY RECTIFIER

SF21 THRU SF28

VOLTAGE RANGE  
CURRENT

50 to 600 Volts  
2.0Ampere

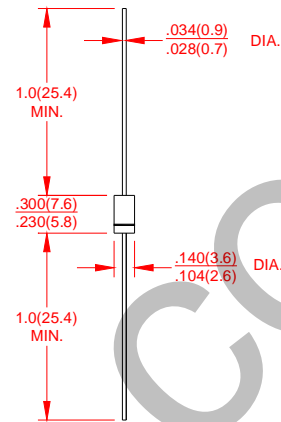
DO-15

### FEATURES

- Low coat construction
- Fast switching for high efficiency.
- Low reverse leakage
- High forward surge current capability
- High temperature soldering guaranteed:  
260°C/10 secods/.375"(9.5mm)lead length at 5 lbs(2.3kg) tension

### MECHANICAL DATA

- Case: Transfer molded plastic
- Epoxy: UL94V-O rate flame retardant
- Polarity: Color band denotes cathode end
- Lead: Plated axial lead, solderable per MIL-STD-202E method 208C
- Mounting position: Any
- Weight: 0.014ounce, 0.39grams



Dimensions in inches and (millimeters)

### MAXIMUM RATINGS AND ELECTRICAL CHARACTERISTICS

- Ratings at 25°C ambient temperature unless otherwise specified
- Single Phase, half wave, 60Hz, resistive or inductive load
- For capacitive load derate current by 20%

	SYMBOLS	SF 21	SF 22	SF 23	SF 24	SF 25	SF 26	SF 27	SF 28	UNITS
Maximum Repetitive Peak Reverse Voltage	$V_{RRM}$	50	100	150	200	300	400	500	600	Volts
Maximum RMS Voltage	$V_{RMS}$	35	70	105	140	210	280	350	420	Volts
Maximum DC Blocking Voltage	$V_{DC}$	50	100	150	200	300	400	500	600	Volts
Maximum Average Forward Rectified Current 0.375"(9.5mm) lead length at $T_A = 55^\circ C$	$I_{(AV)}$	2.0								Amp
Peak Forward Surge Current 8.3mS single half sine wave superimposed on rated load (JEDEC method)	$I_{FSM}$	50								Amps
Maximum Instantaneous Forward Voltage @ 2.0A	$V_F$	0.95			1.25		1.7			Volts
Maximum DC Reverse Current at Rated DC Blocking Voltage	$I_R$	$T_A = 25^\circ C$								$\mu A$
		$T_A = 125^\circ C$								
Maximum Reverse Recovery Time Test conditions $I_F = 0.5A, I_R = 1.0A, I_{RR} = 0.25A$	$t_{rr}$	35								ns
Typical Thermal Capavitance (Measured at 1.0MHz and applied rever voltage of 4.0V)	$C_J$	30				20				PF
Typical Thermal Resistance(NOTE 1)	$R_{\theta JA}$	40								$^\circ C/W$
Operating Junction Temperature Range	$T_J$	(-55 to +150)								$^\circ C$
Storage Temperature Range	$T_{STG}$	(-55 to +150)								$^\circ C$

#### Notes:

1. Thermal resistance from junction to ambient with .375"(9.5mm)lead length, P.C.B. mounted. .



# SUPER FAST RECOVERY RECTIFIER

## SF21 THRU SF28

VOLTAGE RANGE  
CURRENT

50 to 600 Volts  
2.0Ampere

### RATING AND CHARACTERISTIC CURVES SF21 THRU SF28

FIG.1-TYPICAL FORWARD CURRENT DERATING CURVE

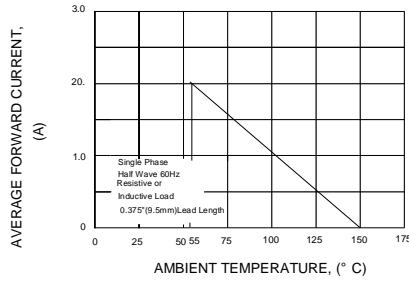


FIG.2-MAXIMUM NON-REPETITIVE PEAK FORWARD SURGE CURRENT

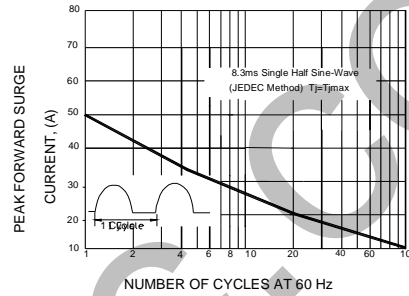


FIG.3-TYPICAL INSTANTANEOUS FORWARD CHARACTERISTICS

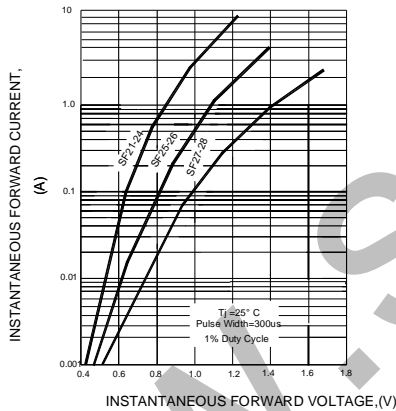


FIG.4-TYPICAL REVERSE CHARACTERISTICS

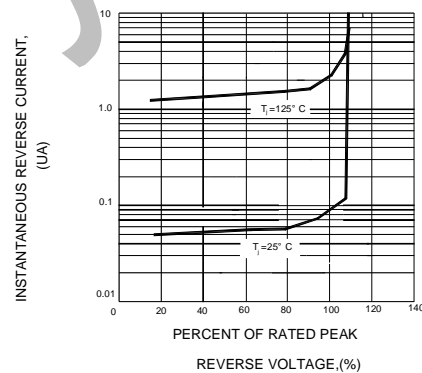


FIG.5-TYPICAL JUNCTION CAPACITANCE

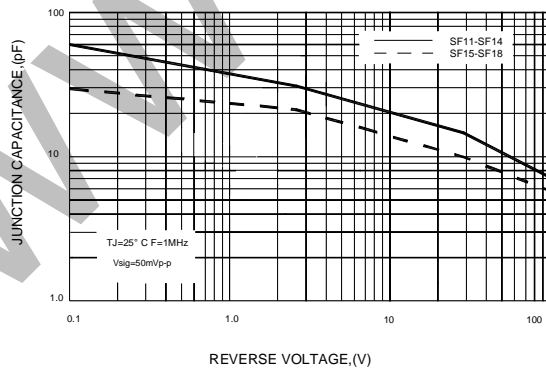
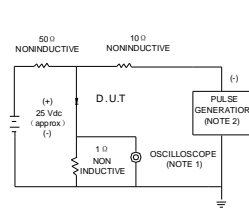
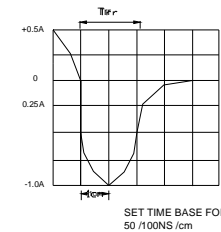


FIG.6-TEST CIRCUIT DIAGRAM AND REVERSE RECOVERY TIME CHARACTERISTIC



NOTE: 1. Rise Time = 7ns max. Input Impedance=1megohm, 22pF  
2. Rise time=10ns max. Source Impedance=50 ohms



SET TIME BASE FOR 50 /100NS /cm